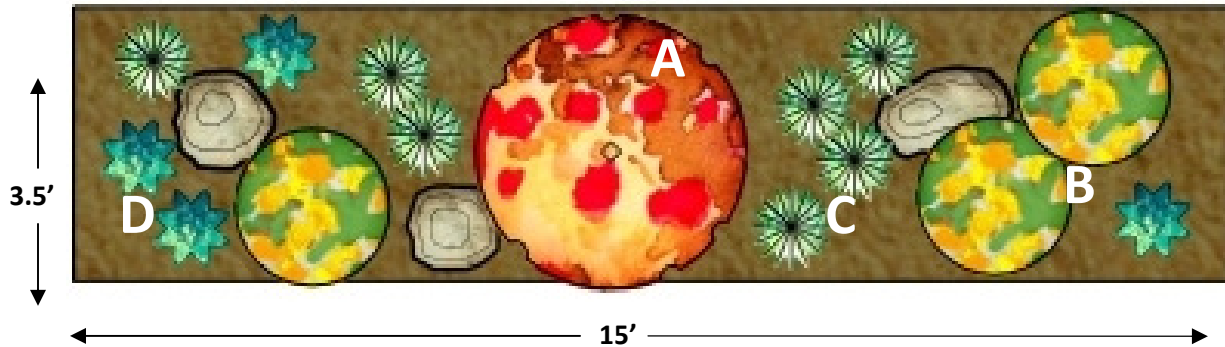


Design #2: San Diego Native Parking Strip

Celebrate San Diego's natural beauty with a garden of local plants!



Plant Key & Symbols

A) Eriogonum fasciculatum
California Buckwheat (1) 3'x4'

B) Viguiera laciniata
San Diego Sunflower (3) 2'x2'
or *Mimulus aurantiacus*
Sticky Monkey-flower (3) 2'x1'

C) Nassella Pulchra
Purple Needle Grass (7) 1'x1'

D) Dudleya pulverulenta
Chalk Dudleya (4) 6"x1'

Mulch and Rocks

- Mojave Gold Decomposed Granite
- Palm Springs Gold Boulders

Care and Maintenance

Water:

Year 1: 1x/week 7-10 minutes

Years 2+: 1x/1-2 weeks 7-10 minutes

Dead head flowering perennials and trim back perennials and grasses 2x/year for a neat, clean appearance.

San Diego has one of the most diverse ecosystems on our planet and our local plants are a perfect example of that diversity. Succulents, grasses, and flowering perennials are all found in abundance throughout our county's natural spaces, many of which make wonderful garden additions.

Replacing that boring strip of grass with a garden displaying our local plants is a great way to save water and attract wildlife. Many bird and insect species are also reliant on our local species for food and shelter. These plants will attract hummingbirds, butterflies, and a variety of seed eating birds to your garden.