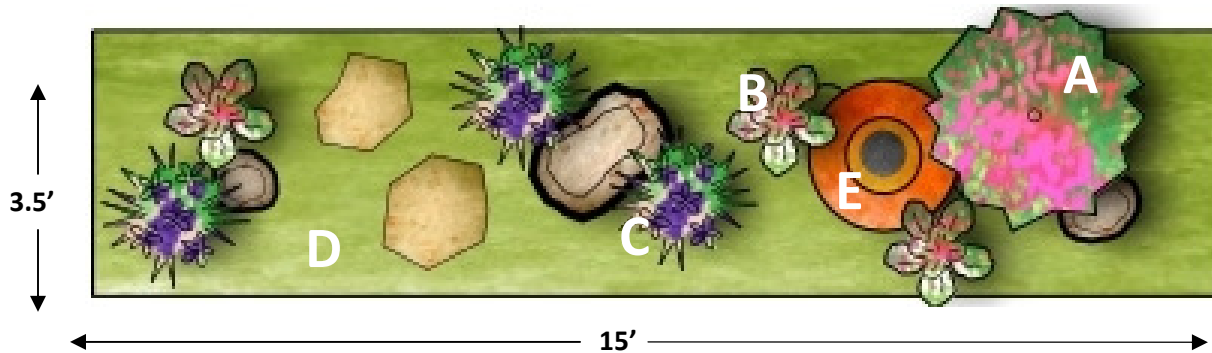


Design #3: Shady Strip

Dry shade plants for inland or coastal gardens.



Plant Key & Symbols

A) *Salvia spathacea*

Hummingbird Sage (1) 3'x3'

B) *Heuchera micrantha*

Alum Root (3) 1'x2'

C) *Iris 'Pacific Coast Hybrids'*

Pacific Coast Hybrid Iris (3) 1'x2'

D) *Fragaria californica*

Woodland Strawberry (groundcover)

E) Ornamental Glazed Pottery Accent

Mulch and Rocks

- Cameron Brown Flagstone
- Baja Chocolate Boulder
- (no mulch necessary)

Care and Maintenance

Water:

Year 1: 1x/week 7-10 minutes

Years 2+: 1x/1-2 weeks 7-10 minutes

Dead head flowering perennials several times a year.

Dry shady areas can pose a dilemma to many gardeners when using conventional shade loving plants. Many of these plants require more water and more fertile soils than many of our shade loving natives.

California's woodlands provide a rich array of shade loving plants that are perfect for any shady condition and many of them are wonderful bird and wildlife attractors as well. Native currants, strawberries, grapes, and cherries attract fruit eaters while Hummingbird Sage, honeysuckle, Alum Root, and lobelia attract hummingbirds and other nectar lovers.

If you don't have a shady spot to plant our lovely woodland natives, consider creating one by planting and oak or other native tree to provide habitat and create a woodland garden in your yard.